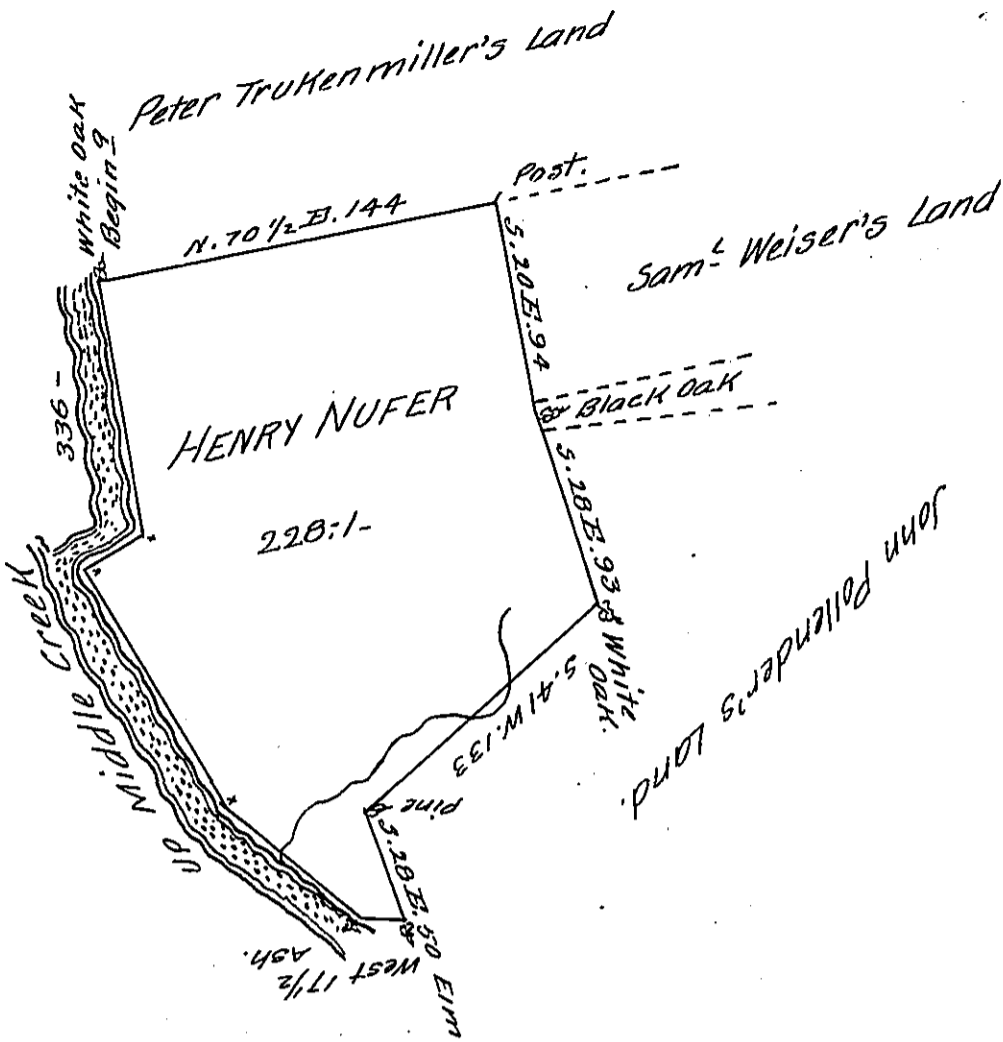


Courses & Distances
up Middle Creek.

N. 60 W. 76
 N. 27 W. 120
 N. 54 E. 30
 N. 18 W. 110

336



The Draught of a Tract of Land called — situate on Middle Creek
 in the County of Cumberland, containing Two Hundred Twenty Eight acres
 25 Perches with the usual allowance of six acres P. Cent: for Roads
 Resurvey'd (agreeable to the Lines of a former survey made by Col:—
 Armstrong, in Pursuance of a Warrant from the Honble Propri-
 etaries to Henry Nufer dated at Philad^a the 13th. day of February
 Anno Dom: 1755) on the 18th. day of September Anno D: 1767.

P Wm Macloy D.S.

To John Lukens, Esq. S. G.
 of Pennsylvania.

IN TESTIMONY that the above is a copy of the original remaining on file in
 the Department of Internal Affairs of Pennsylvania, made
 conformably to an Act of Assembly approved the 16th day of
 February, 1833, I have hereunto set my Hand and caused
 the Seal of said Department to be affixed at Harrisburg,
 this twenty-sixth day of April 1906.

Loach P. Brown
 Secretary of Internal Affairs.